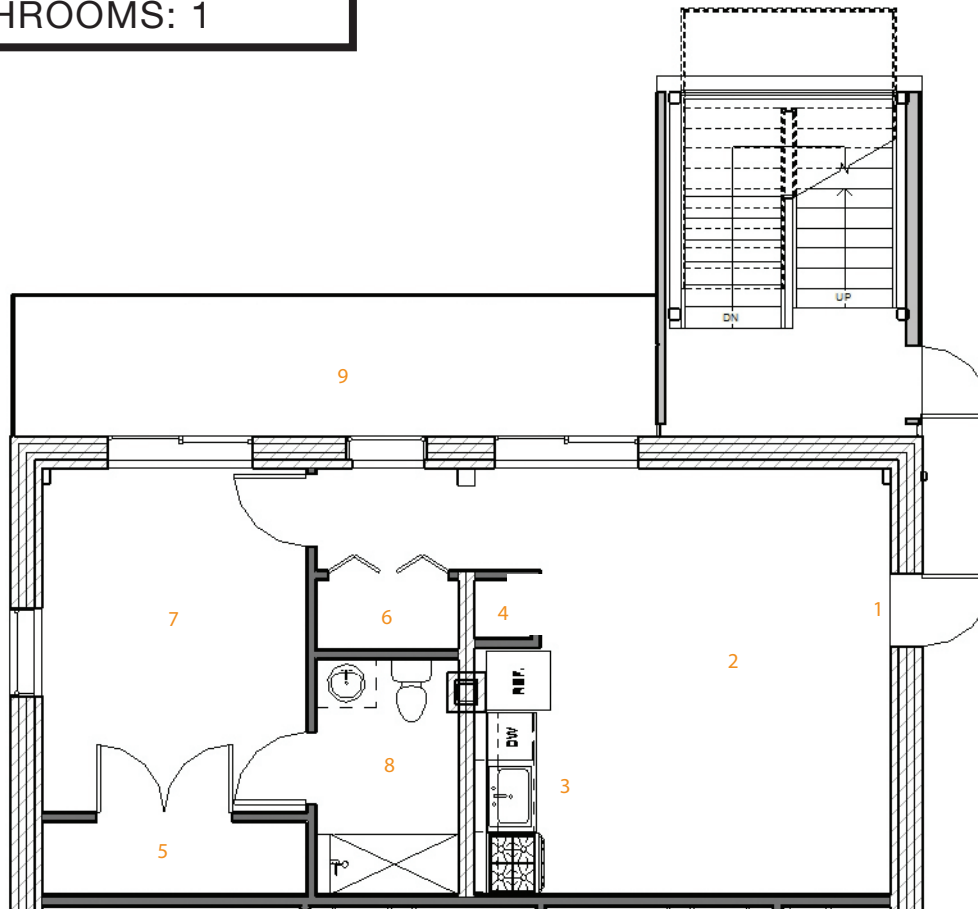
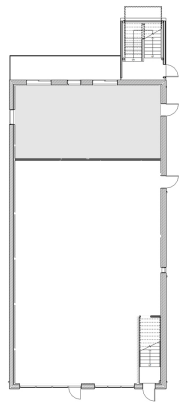


1 BEDROOM
LOFT: 627 SF
BATHROOMS: 1

1. ENTRY
2. LIVING AREA
3. KITCHEN
4. PANTRY
5. CLOSET
6. WASH ROOM
7. BEDROOM
8. BATHROOM
9. PATIO



KEY FEATURES:

Stylish Interiors: Smooth wall finishes and sleek european cabinetry were utilized to contrast with the existing rustic exposed brick walls. This aesthetic exemplifies modern contemporary downtown living.

Flooring: The first and fourth floor units will have a new polished concrete floor finish throughout the unit. The second and third floor units have refinished wood floors in the living and bedroom areas and ceramic tile in the bathroom.

11 Foot Ceiling Height: The open floor plans are accentuated with 11 foot ceilings throughout each unit.

Solid Surface Countertops: Each unit will offer solid surface counter tops.

Custom Modern Cabinets: Each unit will contain modern European style custom cabinets with upper cabinet doors that open up, adding a special touch to your modern loft.

Energy Efficient: These lofts are designed to deliver high energy efficiency with high quality materials, better insulation, LED and compact fluorescent lighting, and energy Star appliances.

Flexible Loft Design: Each unit consists of a large, open-space living area ideal for creative live/work environments.